



In This Issue:

- ▶ The Shipyard | Loading Out YRBM-59
- ▶ Lone Star State Vessel Transport Project
- ▶ Loreauville Middle School Tigers Take The Ship
- ▶ Show Report | Workboat 2024
- ▶ A Christmas Message From Berard

BERARD
SINCE 1945

The Mega Transport Experts

The Shipyard Launching YRBM-59



Job Specs

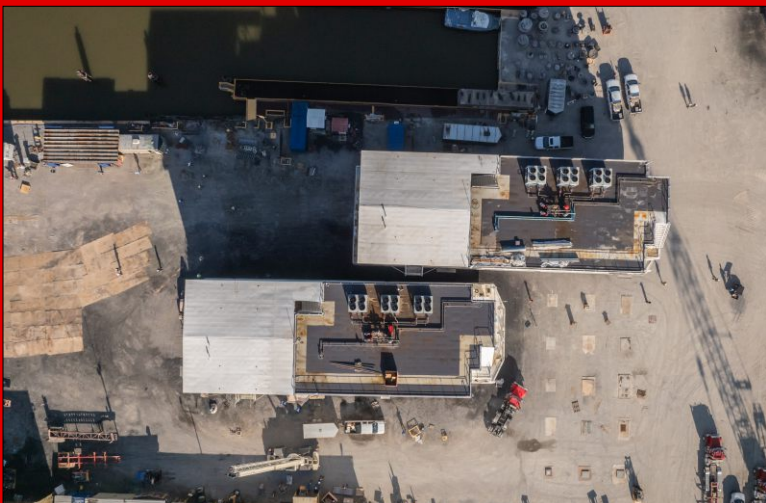
Weight:
1,257 Tons

Dimensions:
151'L x 49'W x 61'H

Equipment Used:
48 axle lines of SPMTs, 2
power packs, barge ramps and
winch trucks

The Berard team was commissioned once again to transport and load out a massive 1,257 ton naval barge YRBM-59. This is another one in a series of builds of similar design. Berard team members began by lifting and transporting the barge from the fabrication area to the client's bulkhead. The 151'L x 49'W x 61'H had to be maneuvered between another build in progress and other obstacles in the fab yard. Our expert operators utilizing the 48 axle lines of SPMTs made easy work fitting the cargo through on it's way to the bulkhead. After reaching the bulkhead, ballasting operations began in preparation for the loading process. Once the dry dock was at the proper level, the Berard team began to slowly roll onto dry dock. Now finally into position, the team lowered the vessel onto pre-positioned supports. The team accomplished the massive feat in only one day. Thanks go out to everyone involved on this amazing project.





Lone Star State Vessel Transport Project



Job Specs

Weight:

305,100 & 64,280 lbs.

Dimensions:

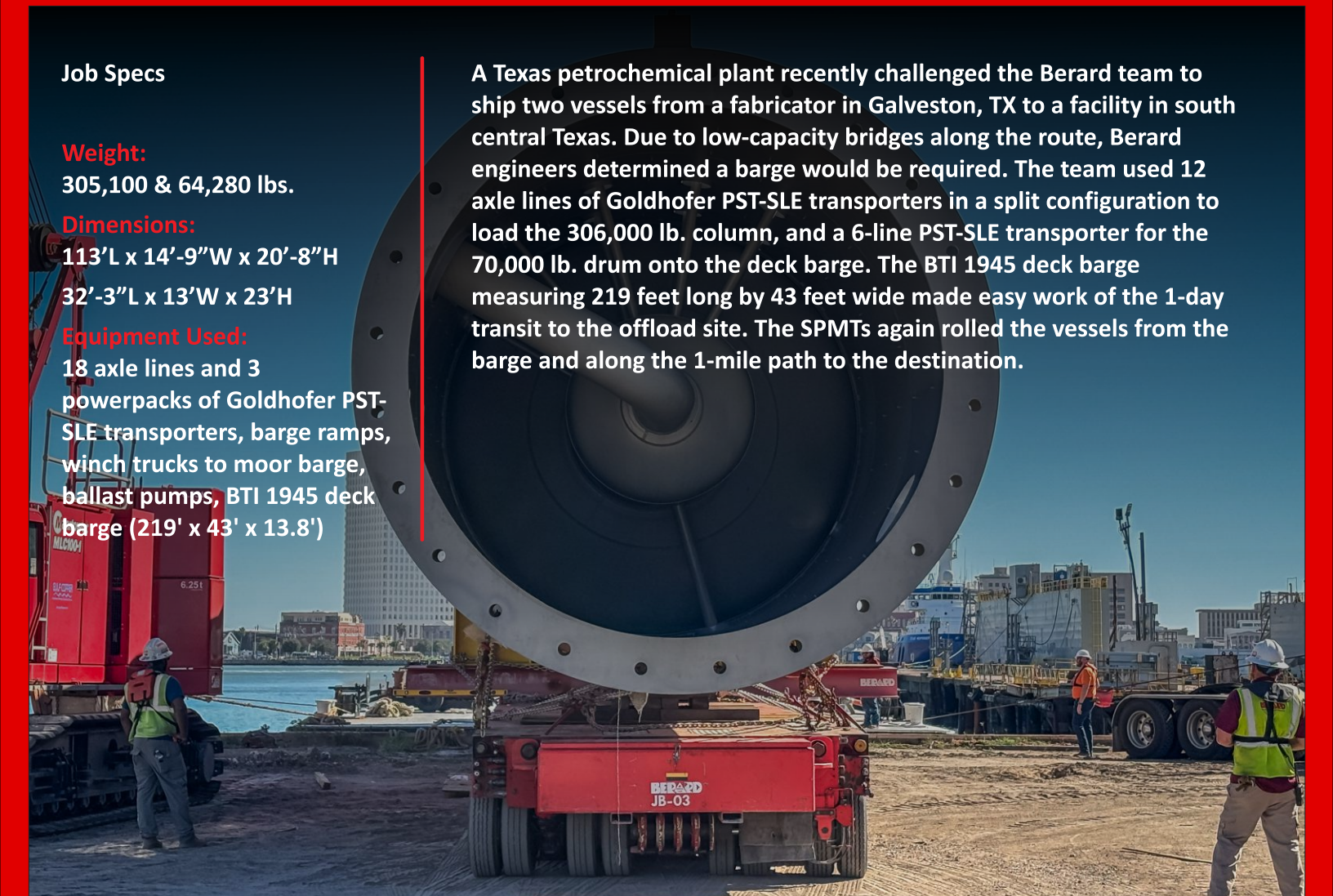
113'L x 14'-9"W x 20'-8"H

32'-3"L x 13'W x 23'H

Equipment Used:

18 axle lines and 3 powerpacks of Goldhofer PST-SLE transporters, barge ramps, winch trucks to moor barge, ballast pumps, BTI 1945 deck barge (219' x 43' x 13.8')

A Texas petrochemical plant recently challenged the Berard team to ship two vessels from a fabricator in Galveston, TX to a facility in south central Texas. Due to low-capacity bridges along the route, Berard engineers determined a barge would be required. The team used 12 axle lines of Goldhofer PST-SLE transporters in a split configuration to load the 306,000 lb. column, and a 6-line PST-SLE transporter for the 70,000 lb. drum onto the deck barge. The BTI 1945 deck barge measuring 219 feet long by 43 feet wide made easy work of the 1-day transit to the offload site. The SPMTs again rolled the vessels from the barge and along the 1-mile path to the destination.





Loreauville Middle School Tigers Take The Ship!



Top left: Coach Braedon Berard, Colten Hulin, Asa Romero, Brenner Babineaux, Jacques DeCourt, Coach Trent Delahoussaye. Bottom left: Amar Polk, Aden Delahoussaye, Ayden Berard, Derric Chambers.

The Loreauville Middle School Flag Football team won the Youngsville FNA League Championship for the 2024 season. The boys had an undefeated season going 10-0 and outscoring their competition 409-31. Our COO Braedon Berard said "The future is bright for these LHS Tigers and I am privileged to have coached these young men. We at Berard are a very proud sponsor... Geaux Tigers"



Show Report Workboat 2024



The Berard team had a great time at the International Workboat Show 2024 in New Orleans, Louisiana. Our sales and marketing team were on hand to welcome everyone and showcase our great company and our heavy transport services we offer to the shipbuilding industries. The show brings in thousands of attendees from around the globe each year and is one of our best shows. The Berard team looks forward to next year's event!





A
Christmas Message
From Berard

The Berard team had a very blessed 2024. All of us send our sincerest Merry Christmas wishes to you and your family. May all that is beautiful, meaningful and brings you joy be yours this holiday season and throughout the coming year. May your family have a holiday season that is full of wonderful memories and joy.

> Birthdays @ Berard

*Happy
Birthday!*

Happy Birthday to These Dedicated Team Members!

**Cindy Aucoin
Devin Gregory
Amanda Hebert
Leah Kern**

**Raven Naquin
Jacob Rogers
George Zenon**